
Environmental Education Program Guide

For Grades K-6

CHICO CREEK Nature Center



1968 E. 8th Street, Chico, CA 95928
(530) 891-4671
bidwellpark.org
naturecenter@chico.com

Supported in part by funding from
The City of Chico



On-site Program

On-site programs take place at The Nature Center, Upper Bidwell Park, or Teichert Ponds.

Off-site Program

We can customize a "Meet the Animals" program at your school-site. Call for available dates and fees.

Fees

- at the Nature Center, Upper Bidwell Park or Teichert Ponds
 - \$45** - 1/2 hour program
 - \$70** - 1 hour program
 - \$95** - 1 1/2 hour program

- Off-site
"Meet the Animals" program only
Please call us at 891-4671 to discuss available dates and fees

We accept cash, personal checks, Visa/Mastercard, or school district purchase orders as payment.

Cancellations must be made seven working days prior to reservation date or no refund or credit will be issued. In the event of rain or severe weather, outdoor programs will be cancelled by our staff and rescheduled at a later date. School credits are valid for up to one calendar year. Teachers are responsible for submitting invoices to the school district for payment.

To Schedule A Program

- Call us at 891-4671 to reserve a date and time for your field trip.
- Programs are available Tuesday through Friday between 9am - 1pm during the regular school year calendar (usually late August through the first week in June.)

The Chico Creek Nature Center, founded in 1982, has evolved into one of Chico's vital community resources. We provide quality environmental education programs including field trips, nature camps for youth, birthday party programs, and weekend activities, to thousands of visitors annually.

We serve as the interpretive and information center for Bidwell Park. Our organization offers free exhibits, a native plant garden, a fresh water pond, a living-animal museum, and a gift shop. Free Park maps and information are available at the front desk.

Located in the Heart of Bidwell Park

1968 E. 8th Street, Chico CA 95928
(530) 891-4671

Hours

Tuesday-Sunday 11am-4pm
(530) 891-4671
bidwellpark.org
naturecenter@chico.com

Lower Park Programs-the following programs will meet at the Nature Center.

AQUATIC INVESTIGATIONS

In this hands-on exploration of Big Chico Creek, students will learn about the riparian and aquatic habitats of Bidwell Park. Naturalists and students will explore and discuss the life cycles and adaptations of aquatic insects, amphibians and fish, their places in the food web, and the impact of pollution on the creek. Offered only in the spring months. We recommend students bring water shoes or an extra pair of shoes for walking in the creek.

1 1/2 hour program.
1st-6th grades.



ANIMAL DISCOVERY HIKE

In this program, students will become nature detectives and search for clues of animal activity in the park. Naturalists will lead the class on a hike through Lower Bidwell Park to look for and identify scat, nests, bones, feathers, and burrows and discuss ecological principles including the role animals play in the food web.

1 or 1 1/2 hour program.

Animal Discovery Hike A. K-3rd grade:

Students will explore biodiversity, life cycles, and adaptations, and they will learn about the characteristics of carnivores, omnivores and herbivores by examining skulls from our collection.

Animal Discovery Hike B. 4th-6th grade:

Students will learn about the food web, the ecological roles of plants and animals, and principles such as energy transfer and resource availability.

BIRDS OF BIDWELL PARK

Students will discover the amazing bird haven

of Bidwell Park, which hosts hundreds of bird species. The program will begin at the Nature Center where students and naturalists will examine specimens and discuss bird adaptations. The program will continue with a hike in the park to look for species and examine their habitats.

1 hour program. 1st-6th grade.

MEET THE ANIMALS

In this program, students will meet and touch some of our most popular reptiles, birds, amphibians and mammals. Naturalists will discuss physical characteristics, adaptations, natural habitats and histories of these ambassadors of the wild.

1/2 hour program- preschool/kindergarten

1 or 1/2 hour program- 1st-6th grade.

Meet the Animals A. K-2nd grade:

Students will learn about our animals, their life cycles, and their behaviors.

Meet the Animals B. 3rd-6th grade:

This program will focus on our animals' roles in the food web and the physical characteristics and adaptations that have helped them survive in their environments.

RAPTORS

This program explores the special adaptations and needs of these fascinating birds of prey. Students will get a close up view of our live raptors and taxidermy specimens and learn about raptors' habitats, life cycles, physical adaptations, their role in the foodweb, and how they differ from other birds.

1 hour program. 1st-6th grade.

GEOLOGY HIKE

Students will hike in Upper Bidwell Park and learn how to read its fascinating geologic history. Stu-

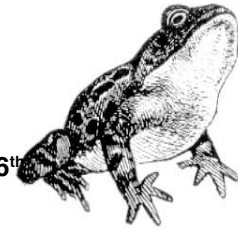
dents will be introduced to basic concepts such

Teichert Ponds Program-the following program will meet at Teichert Ponds.

WETLANDS DISCOVERY

The wetlands of Teichert Ponds are one of Chico's best kept secrets. During this hike, students will explore this valuable habitat, which supports migratory waterfowl and beavers. Naturalists and students will examine various adaptations of plants and animals to the wetland environment and their roles in the food web. We will also discuss reasons for preserving these valuable resources.

1 1/2 hour program. 1st-6th



Upper Bidwell Park Programs-the following programs meet in Upper Bidwell Park. These programs may not be shortened.

as rock types, land formations, weathering, and erosion.

1 1/2 hour program. 1st-6th grade.

Geology A. 1st-3rd grade: _

Naturalists and students will discuss weathering and erosion, fossils, minerals and their uses, and the geologic layers of Bidwell Park.

Geology B. 4th-6th grade: _

Naturalists and students will discuss the properties of minerals, plate tectonics, volcanism, weathering and the effects these forces have had on shaping the geology of Bidwell Park.

and animal habitats.

1 1/2 hour program. 1st-6th grade.

Habitat A. 1st-3rd grade:

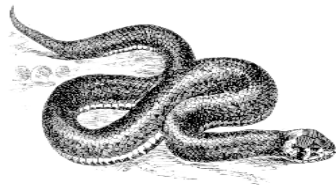
Naturalists and students will discuss biodiversity, the food web, adaptation, extinction, and the characteristics of carnivores, herbivores, and omnivores.

Habitat B. 4th-6th grade: _

Naturalists and students will discuss the food web and ecological principles such as energy transfer, ecosystem dynamics, photosynthesis, and resource availability.

HABITAT HIKE

Using beautiful Upper Bidwell Park as a setting, students will discover and explore unique plant



MAIDU SHELTER HIKE

Naturalists will lead a hike to a Maidu rock shelter and discuss the Maidu, their customs, how they were influenced by the environment, and the ways they used Bidwell Park to survive. In order to preserve this sensitive site, students view, but do not enter the rock shelter.

1 1/2 hour program. 1st - 6th grade only.

This program was developed in accordance with Social Science standards for 3rd-5th grades.

Chico Creek Nature Center programs are designed to meet the science standards for California public schools.